

STAINLESS STEEL

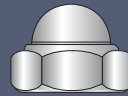


CHINA SPECIAL FASTENERS, INC.

NEW METRIC STAINLESS ADDITIONS



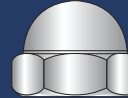
DIN 603 CARRIAGE BOLTS
A2 & A4



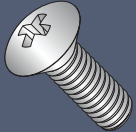
DIN 986 NYLON INSERT DOME CAP NUTS
A2



DIN 6921 FLANGE SCREWS
A2



DIN 1587 DOMED HEX CAP NUTS
A2 & A4



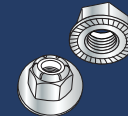
DIN 966 OVAL PHILLIPS MACHINE SCREWS
A2



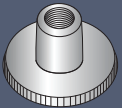
DIN 6334 HEX COUPLING NUTS
A2 & A4



COLD-FORGED WING SCREWS, AMERICAN-STYLE
A2



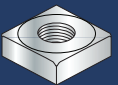
DIN 6926 NYLON INSERT FLANGE STOP NUTS
A2 (WITH & WITHOUT SERRATIONS)



KNURLED THUMB NUTS
A2



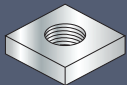
TYPE-315 AMERICAN STYLE WING NUTS
A2 & A4



DIN 557 SQUARE NUTS
A2



ISO 4032 HEX NUTS
PAGE 3



DIN 562 THIN SQUARE NUTS
A2



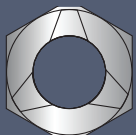
TYPE-9070 ROUND COUPLING NUTS
A2



DIN 917 HEX CAP NUTS
PAGE 5



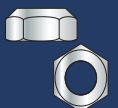
COUNTERSUNK FINISHING WASHERS
A2 & A4



DIN 934 PREVAILING TORQUE HEX LOCK NUTS
A2



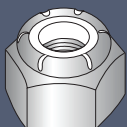
DIN 128 CURVED LOCK WASHERS
A2 & A4



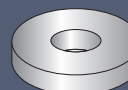
DIN 980 PREVAILING TORQUE TOP LOCK NUTS
A2



DIN 6798A SERRATED EXTERNAL LOCKWASHERS
A2



DIN 982 NYLON INSERT STOP NUTS
A2 & A4



DIN 9021 FENDER WASHERS
A2 & A4

MACHINE SCREWS

COMBINATION DRIVE

- Pan (18-8)
- Truss (18-8)

PHILLIPS

- Binding Undercut (18-8)
- Flat 82° (18-8, Plain)
- Flat 82° (18-8, Black Oxide)
- Flat 82° Undercut (18-8, Plain)
- Flat 82° Undercut (18-8, Black Oxide)
- Flat 82° (316, Plain)
- Flat 82° Undercut (316, Plain)
- Flat 100° (18-8, Plain)
- Flat 100° (18-8, Black Oxide)
- Flat 100° Undercut (18-8, Plain)
- Fillister (18-8)
- Hex Washer (18-8)
- Oval (18-8)
- Oval Undercut (18-8)
- Pan (18-8, Plain)
- Pan (18-8, Black Oxide)
- Pan (316, Plain)
- Pan (410, Plain)
- Round (18-8)
- Truss (18-8)
- Truss (18-8, Black Oxide)

SLOTTED & UNSLOTTED

- Binding Undercut (18-8)
- Flat 82° (18-8)
- Flat Undercut (18-8)
- Flat 100° (18-8)
- Fillister (18-8)
- Oval (18-8)
- Oval Undercut (18-8)
- Pan (18-8)
- Round (18-8)
- Truss (18-8)
- Hex Slotted (18-8)
- Hex Unslotted (18-8)
- Hex Washer Slotted (18-8)
- Hex Washer Unslotted (18-8)

SIX-LOBE

- Flat 82° (18-8, Plain)
- Flat Undercut (18-8)
- Flat 100° (18-8)
- Pan (18-8, Plain)
- Pan (18-8, Black Oxide)
- Truss (18-8)

SEMS MACHINE SCREWS

PHILLIPS PAN

- External Tooth (410 w/ 410 Washer)
- External Tooth (18-8 w/ 10 Washer)
- Internal Tooth (18-8 w/ 410 Washer)
- Split Lockwasher (18-8)
- Conical Washer (18-8 w/ 410 Washer)
- Double Washer (18-8)
- Split Lock & Narrow Flat
- Split Lock & Regular Flat

SIX-LOBE PAN

- External Tooth 18-8 (410 Washer)

SELF-PIERCING SCREWS

- Hex Washer Slotted (18-8)
- Hex Washer Slotted (410)
- Hex Washer Unslotted (410)
- Modified Truss Phillips (18-8)
- Modified Truss Phillips (410) *NEW*

SOCKETS

- Cap Screws (18-8)

SELF-TAPPING SCREWS

COMBINATION DRIVE TYPE-A

- Pan 18-8

SIX-LOBE TYPES A & AB

- Flat 82° (18-8) *NEW*
- Flat 82° Undercut (18-8) *NEW*
- Pan Type A (18-8)
- Pan Type AB (18-8)
- Pan Type AB (18-8, Black Oxide)

PHILLIPS TYPES A & AB

- Flat Type-A (18-8 & 18-8, Black Oxide)
- Flat Undercut Type-A (18-8)
- Flat Type-AB (18-8)
- Flat Undercut Type-AB (18-8)
- Oval Type-A (18-8)
- Oval Type-AB (18-8)
- Oval Undercut Type-A (18-8)
- Oval Undercut Type-AB (18-8)
- #8 Oval w/ #6 Head Type-A (18-8)
- Pan Type-A (18-8)
- Pan Type-AB (18-8, Plain)
- Pan Type-A (18-8, Black Oxide)
- Pan Type-AB (18-8, Black Oxide)
- Truss Type-A (18-8)
- Truss Type-AB (18-8)
- Truss Type-AB (410)
- Hex Washer Type-A (18-8)

SLOTTED & UNSLOTTED TYPES A & AB

- Pan Slotted Type-A (18-8)
- Pan Slotted Type-AB (18-8)
- Hex Washer Slotted Type-A (18-8)
- Hex Washer Slotted Type-AB (18-8)
- Serrated Hex Washer Slotted Type-AB (18-8)
- Hex Washer Unslotted Type-A (18-8)
- Hex Washer Unslotted Type-AB
 - 18-8
 - 18-8, Black Oxide
- Serrated Hex Washer Unslotted Type-AB (18-8)

SQUARE RECESS TYPE A & AB

- Flat Type-A (18-8)
- Flat Undercut Type-A (18-8)
- Flat Undercut Type-AB (18-8)
- Pan Type-A (18-8)
- Pan Type-AB (18-8)

TYPE-B

- Phillips Flat (18-8)
- Phillips Flat Undercut (18-8)
- Phillips Flat Undercut (410)
- Phillips Oval Undercut (18-8)
- Phillips Pan (18-8)
- Phillips Truss (18-8)
- Six-Lobe Pan (18-8)
- Unslotted Hex Washer (18-8)
- Slotted Hex Washer (18-8)

HIGH-LOW

- Phillips Flat (18-8)
- Phillips Flat (410)
- Phillips Flat Undercut (18-8)
- Phillips Flat Undercut (410)
- Phillips Pan (18-8)
- Phillips Pan (410)
- Slotted Hex Washer (18-8)
- Unslotted Hex Washer (410)
- Unslotted Hex Washer (18-8)
- Six-Lobe Flat (18-8)
- Six-Lobe Pan (18-8)
- Six-Lobe Pan (410)

DRIVE SCREWS

TYPE-U

- Round (18-8)
- Round (316)

THREAD-CUTTING SCREWS

TYPE-F

- Phillips Flat (410)
- Phillips Flat (18-8)
- Phillips Flat Undercut
 - 410
 - 18-8
 - 18-8, Black Oxide
- Phillips Pan (18-8)
- Phillips Pan (410)
- Phillips Truss (18-8)
- Unslotted Hex (18-8)
- Slotted Hex Washer (18-8)
- Slotted Hex Washer (410)
- Unslotted Hex Washer (410)
- Unslotted Hex Washer (18-8)
- Six-Lobe Flat (18-8)
- Six-Lobe Pan (18-8)
- Square Recess Undercut (300)

TYPE-1

- Phillips Pan (18-8)

TYPE-23

- Phillips Flat (18-8)
- Phillips Flat Undercut (18-8)
- Phillips Pan (18-8)
- Slotted Hex Washer (18-8)
- Unslotted Hex Washer (18-8)

TYPE-25

- Phillips Flat (18-8)
- Phillips Flat Undercut (18-8)
- Phillips Pan (18-8)
- Phillips Pan (410)
- Phillips Truss (18-8)
- Six-Lobe Pan (18-8)
- Slotted Hex Washer (18-8)

TRILOBULAR THREAD-ROLLING SCREWS TO SAE J81

- Flat Phillips (410)
- Flat Undercut Phillips (410)
- Flat Phillips (18-8)
- Flat Undercut Phillips (18-8)
- Pan Phillips (410)
- Pan Phillips (18-8)
- Truss Phillips (18-8)
- Truss Phillips (410)
- Slotted Hex Washer (410)
- Slotted Hex Washer (18-8)
- Unslotted Hex Washer (410)
- Unslotted Hex Washer (18-8)
- Six-Lobe Flat (18-8)
- Six-Lobe Flat Undercut (18-8)
- Six-Lobe Pan (18-8)
- Six-Lobe Pan (410)

TRILOBULAR THREAD-ROLLING SCREWS W/ 48-2 THREAD PATTERN

- Flat Phillips (410)
- Flat Phillips (18-8)
- Flat Undercut Phillips (18-8)
- Pan Phillips (410)
- Pan Phillips (18-8, Black Oxide)
- Pan Phillips (18-8)
- Truss Phillips (18-8)
- Six-Lobe Flat (18-8)
- Six-Lobe Flat Undercut (18-8)
- Six-Lobe Pan (410)
- Six-Lobe Pan (18-8)
- Six-Lobe Pan (18-8, Black Oxide)
- Unslotted Hex Washer (18-8)

CAP SCREWS & BOLTS

- Carriage Bolts, Square Neck (18-8)
- Carriage Bolts, Ribbed Neck (18-8)
- Hex Cap Screws (18-8)
- Hex Cap Screws (316)
- Tap Bolts (18-8)
- Lag Screws (18-8)
- Hex Flange (18-8)
- Serrated Hex Washer Flange Screws (18-8)
- Hanger Bolts (18-8)

NUTS

- Acorn, Cap (18-8)
- Cage (18-8)
- Coupling, Hex (18-8)
- Finished Hex
 - 18-8
 - 18-8 w/ Black Oxide
 - 316
- Heavy Hex (18-8)
- Jam (18-8)
- Machine Screw, Hex
 - 316
 - 18-8
 - 18-8 w/ Black Oxide
 - Small Pattern 18-8
- Machine Screw, Square (18-8)
- Flange, Serrated (18-8)
- Flexible Lock, Light Hex
 - Full & Thin Height (18-8)
- K-Lock
 - 18-8
 - 18-8 w/ Black Oxide
 - 18-8 Small Pattern
- Nylon Insert Stop
 - Regular Pattern (18-8)
 - Regular Pattern (18-8 w/ Black Oxide)
 - Regular Pattern (316)
 - Thin Pattern (18-8)
 - Thin Pattern (18-8 w/ Black Oxide) ***NEW***
- Spring, Flat-Type (18-8)
- Two-Way Reversible (18-8)
- Wing, Cold Forged (18-8)

WASHERS

- Countersunk Finishing (18-8)
- EPDM Bonded (18-8)
- Standard Flat (18-8)
- Standard Flat (316)
- USS Flat (18-8)
- USS Flat (316)
- SAE Flat (18-8)
- SAE Flat (316)
- Fender (18-8)
- Fender (316)
- Flat Machine Screw Washers
 - 18-8
 - 18-8, Black Oxide
- Flat Type-B (18-8)
 - Narrow Series
 - Regular Series
 - Wide Series
- Regular Split Lock (Medium)
 - 18-8
 - 18-8, Black Oxide
 - 316
- Heavy Split (18-8)
- High Collar Split (18-8)
- External Tooth Lock
 - 410
 - 18-8
 - 18-8, Black Oxide
- Tooth Lock, Internal (410)
- Tooth Lock, Internal (18-8)
- Tooth Lock, External/Internal (18-8)
- Tooth Lock, External Countersunk (18-8)

DECK / DRYWALL SCREWS

DECK (BUGLE HEAD)

- Phillips (18-8)
- Square Recess w/#17 Point (18-8)

DRYWALL (BUGLE HEAD)

- Phillips Drill Point (410)

DRYWALL (TRIM HEAD)

- Six-Lobe Fine Thread (18-8)
- Square Recess w/#17 Point (18-8)

SELF-DRILLING SCREWS (#2 / #3 POINT UNLESS NOTED)

PHILLIPS

- Flat (410)
- Flat Undercut (410)
- Flat (18-8)
- Flat Undercut (18-8)
- Flat, #4 Point w/ Wings, Machine Screw Thread (410)
- Flat Undercut, Machine Screw Thread (18-8)
- Flat Undercut, Machine Screw Thread (410)
- Hex Washer (18-8)
- Modified Truss (410)
- Modified Truss (18-8)
- Oval (410)
- Oval (18-8)
- Oval Undercut (18-8)
- Pan (18-8)
- Pan (18-8, Black Oxide)
- Pan (410)
- Pancake (18-8) ***NEW***
- Pancake (410) ***NEW***
- Wafer, Spaced Thread (18-8)
- Wafer, Machine Screw Thread (410)
- Wafer, Machine Screw Thread (18-8)

SLOTTED

- Hex Washer (410)
- Hex Washer (18-8)

UNSLOTTED HEX WASHER

- Spaced Thread (18-8)
- Spaced Thread, (316) ***NEW***
- Spaced Thread, #2 & #3 Point (410)
- Spaced Thread, #2 & #3 Point (410 Black Oxide)
- Machine Thread, #2 & #3 Point (18-8)
- Machine Thread, #2 Point (410)
- Machine Thread, #4 Point (410)
- Machine Thread, #4 pt w/ Wings (410)
- Machine Thread, #5 Point (410)
- Spaced Thread, #4 Point (410)
- Spaced Thread, #5 Point (410)
- Serrated Hex Washer
 - #2 & 3 pt w/ Spaced Thread (18-8)
 - #3 pt w/ Machine Screw Thread (18-8)
- Spaced Thread w/ Neo EPDM Washer
 - #2 & #3 Point (18-8)
 - #2 & #3 Point (410)

SIX-LOBE

- Flat (18-8)
- Flat (410)
- Pan (18-8)
- Pan (410)
- Pancake (18-8) ***NEW***
- Pancake (410) ***NEW***
- Wafer (18-8)

SQUARE RECESS

- Flat (18-8)
- Flat (410)
- Flat Undercut (18-8)
- Pan (410)
- Pan (18-8)
- Pancake (18-8) ***NEW***
- Pancake (410) ***NEW***

SQUARE-PHILLIPS COMBO RECESS

- Pancake (18-8) ***NEW***
- Pancake (410) ***NEW***

ELECTRONIC HARDWARE (303 SERIES)

- Flush Head Clinch Studs
- Clinch Nuts
- Self-Clinching Standoff
- Round Spacers
- Round Standoffs
- Hex Female Standoffs
- Round Male/Female Standoffs
- Hex Male/Female Standoffs
- Hex Jack Screws

BLIND RIVETS & RIVET NUTS

- 18-8 Stainless Rivet / 18-8 Stainless Mandrel
 - Dome Head
 - Large Flange
- 18-8 Stainless Rivet / Steel Mandrel
 - Countersunk
 - Dome Head
 - Large Flange
- Closed End, Dome (18-8)
- High Strength Double Lock Dome (18-8)
- Structural, Protruding Head (18-8)
- Brazier Head Drive Rivet (302 SS Pin)
- Countersunk Drive Rivet (302 SS Pin)
- Universal Head Drive Rivet (302 SS Pin)
- Blind Threaded Insert, Small Head (303 Series)

PINS

- Coiled (420)
- Slotted (420)
- Slotted (18-8)

RETAINING RINGS

- Internal (15/7 SS)
- External (15/7 SS)
- E & SE Rings (15/7 SS)

THUMB SCREWS

- Type-B No Shoulder (18-8)
- Type-A With Shoulder (18-8)
- Knurled (303 Series)
- Knurled w/ Washer Face (303 Series)

WOOD-WORKING SCREWS (18-8)

CABINET SCREWS

- Pan Phillips
- Square Phillips

DECK SCREWS

- Flat Square Recess w/ Nibs

EXTERIOR SCREWS

- Flat Six-Lobe w/ Type-17 Point

FULL-BODIED

- Flat Phillips

WELD NUTS

- Offset Hole (18-8)

ANCHORS

- Drop-In (303 / 304 SS)
- Wedge (304 SS)
- Hammer Drive (w/ 304 SS Nail)
- Sleeve Anchors (303 / 304 SS)
 - Hex
 - Flat
 - Acorn Nut
 - Round

METRIC FASTENERS

CAP SCREWS

ISO 7380 Six-Lobe Button Head (A2 SS)

CARRIAGE BOLTS

- DIN 603 Round Head (A2 SS) ***NEW***
- DIN 603 Round Head (A4 SS) ***NEW***

ELECTRONIC HARDWARE

- Hex Male/Female Standoffs (18-8)

FLANGE SCREWS

- DIN 6921 (A2 SS) ***NEW***
- DIN 6921, Serrated (A2 SS) ***NEW***

MACHINE SCREWS

- DIN 965 Flat Phillips (Type-H)
 - 18-8
 - A4 ***NEW***
 - Black Oxide Over (18-8)
- DIN 966 Oval Phillips (Type-H) (A4) ***NEW***
- DIN 7985A Pan Phillips (Type-H)
 - 18-8
 - A4 ***NEW***
 - Black Oxide Over 18-8
- ISO 7045 Six-Lobe Pan (A2 SS)
- ISO 14581 Flat Six-Lobe (18-8)
- ISO 14583 Pan Six-Lobe
 - A2
 - A4 ***NEW***
- JIS B 1111 Pan Phillips (A2 SS)
- JIS B 1111 Truss Phillips (A2 SS)

THREAD-FORMING SCREWS

- EJOT® Type-PT® Alternative (A2 SS)
 - Flat Phillips
 - Flat Six-Lobe
 - Pan Phillips
 - Pan Six-Lobe
 - Round Washer Six-Lobe

WING SCREWS

- Cold-Forged, American Style (A2 SS) ***NEW***

NUTS

- DIN 439 Jam (A2 SS)
- DIN 466 Knurled Thumb (A2 SS) ***NEW***
- DIN 557 Square (A2 SS) ***NEW***
- DIN 562 Thin Square (A2 SS) ***NEW***
- DIN 917 Hex Cap (A2) ***NEW***
- DIN 928 Square Weld (A2)
- DIN 929 Hex Weld
 - A2
 - A4 ***NEW***
- DIN 934 Hex
 - Class 50 (18-8)
 - Class 50 (A4)
 - Class 50 (Black Oxide Over 18-8)
- DIN 934 Prevailing Torque Lock (A2) ***NEW***
- DIN 980 Prevailing Torque Top Lock (A2) ***NEW***
- DIN 982 Nylon Insert Stop
 - A2 ***NEW***
 - A4 ***NEW***
- DIN 985 Nylon Insert Stop
 - 18-8
 - A4 SS
- DIN 986 Nylon Insert Dome Cap (A2) ***NEW***
- DIN 1587 Domed Hex Cap
 - A2 ***NEW***
 - A4 ***NEW***
- DIN 6334 Hex Coupling
 - A2 ***NEW***
 - A4 ***NEW***
- DIN 6923 Flange
 - 18-8
 - 316
 - Serrated (A2 SS)
- DIN 6926 Nylon Insert Flange
 - A2 ***NEW***
 - Serrated A2 ***NEW***
- ISO 4032 Hex, Class 70 (A2) ***NEW***
- K-Lock (A2 SS)
- Type 9070 Round Coupling (A2) ***NEW***
- Wing, Type 315 American Style
 - A2 ***NEW***
 - A4 ***NEW***

SEMS

- DIN 7985A Pan Phillips
 - Internal Tooth Washer (A2SS)
 - Spring Lock Washer to DIN 6905 (18-8)
- ISO 7045 Pan Phillips
 - Conical (18-8 Screw / 410 Washer)
 - External Tooth (18-8 Screw / 410 Washer)
 - Internal Tooth (A2 Screw / 410 Washer)
 - Split Lock (A2 Screw / 304 SS Washer)
- JIS B 1188 Pan Phillips (A2 SS)
 - Helical (304 Split Washer / 302 Flat Washer)

THREAD ROLLING SCREWS

- DIN 7500-M Flat Six-Lobe (18-8)
- DIN 7500-CE Pan Six-Lobe (18-8)
- DIN 7500-M Flat Type-Z (18-8)
- DIN 7500-C Pan Type-Z (18-8)
- DIN 7500-D Hex Washer Unslotted (18-8)

WASHERS

- Countersunk Finishing
 - A2 ***NEW***
 - A4 ***NEW***
 - Serrated A2 ***NEW***
- DIN 125A Standard Flat
 - 18-8 SS
 - Black Oxide Over 18-8 SS
- DIN 127B Split Lock
 - 18-8 SS
 - Black Oxide Over 18-8 SS
- DIN 128 Curved Lock
 - A2 ***NEW***
 - A4 ***NEW***
- DIN 6797A External Tooth Lock Washer
 - A2
- DIN 6797J Internal Tooth Lock Washer (A2 SS)
- DIN 6798A External Tooth Lock Washer
 - Serrated A2 ***NEW***
- DIN 7980 High Collar Split Lock Washer (A2 SS)
- DIN 9021 Fender
 - A2 ***NEW***
 - A4 ***NEW***

MILITARY-GRADE FASTENERS

SELF-TAPPING SCREWS

- MS51861-C Pan Phillips Type-AB (410)

MACHINE SCREWS

- MS24693 100° Flat Phillips
 - 18-8
 - 18-8 SS w/ Black Oxide
- MS35275 Drilled Fillister Slotted Coarse (300-Series)
- MS35276 Drilled Fillister Slotted Fine (300-Series)
- MS51957 Pan Phillips Coarse
 - 18-8
 - 18-8 SS with Black Oxide
- MS51958, Pan Phillips Fine
 - 18-8 SS
 - 18-8 SS with Black Oxide
- MS51959, 82° Flat Phillips Coarse (18-8)
- MS51960, 82° Flat Phillips Fine (18-8)

NUTS

- MS35649-C, Hex Machine Screw Coarse (300-Series)
- MS35650-C Hex Machine Screw Fine (300-Series)

PINS

- MS16555 Dowel (400-Series)

HEX CAP SCREWS

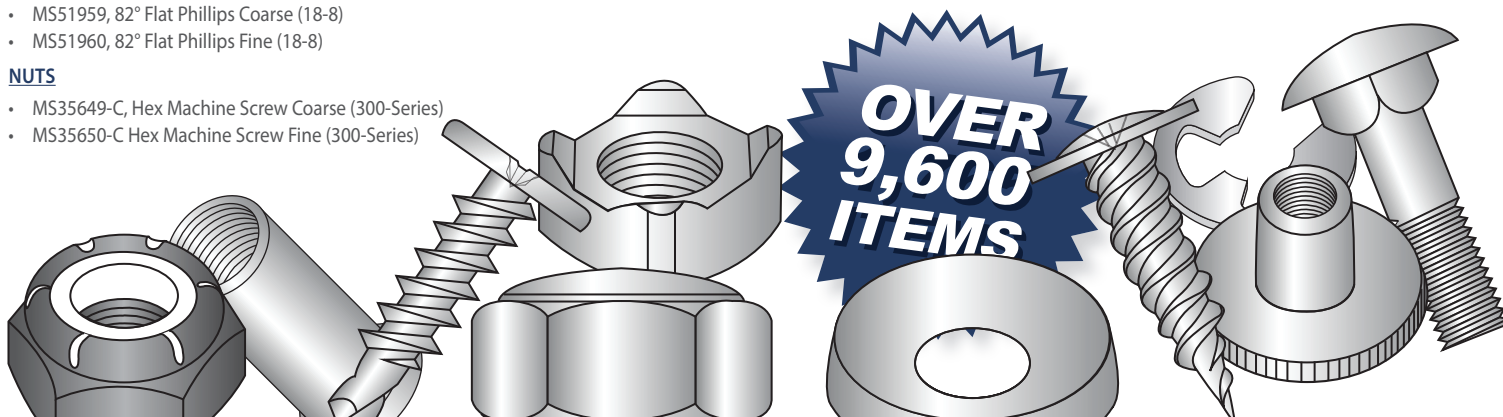
- MS35307 Hex Head Cap Screws (300-Series)
- MS35308 Hex Head Cap Screws Fine (300-Series)

SOCKET CAP SCREWS

- NAS1351 Fine Thread (300-Series)
- NAS1351A Fine Thread (A286 SS)
- NAS1352 Coarse Thread (300-Series)
- NAS1352A Coarse Thread (A286 SS)
- MS16995 Coarse Thread (300-Series)
- MS16996 Fine Thread (300-Series)

WASHERS

- AN960-C Flat Washers (18-8)
- MS15795 Flat Washers (300-Series)
- MS15795 Flat Washers (300-Series w/ Black Oxide)
- MS35333 Internal Tooth Lock Washer (410)
- MS35335 External Tooth Lock Washer (410)
- MS35338 Split Lock
 - 316
 - 420
- NAS620
 - Flat Washers (300-Series)
 - Light Flat (300-Series)
- NAS1149 Flat Washers (18-8)



CLASSIFICATIONS & USES OF STAINLESS FASTENERS

AUSTENITIC STAINLESS

This is the most corrosion-resistant type of stainless. The chromium content is approximately 18-30% / the nickel content is 8-20%, which is the reason for the descriptor "18-8". These metals cannot be heat-treated but some hardenability can be achieved via cold-working. Among these "18-8 stainless classifications" are:

CLASSES 302 - 305

- Class 302: General purpose stainless
- Class 303: Similar to 302 but with elements added to improve machining.
- Class 304: Ideal for cold-heading; superior corrosion resistance to 302.
- Class 305: Superior ductility due to higher nickel content than 304 make it ideal for cold-forming high-strength nuts.

WHERE TO USE:

Classes 302-305 stainless have a variety of interior uses such as kitchen and medical equipment. It can also be used outdoors in less-corrosive environments.

CLASS 316

This stainless variety—though part of the "300-series"—is segregated from the 18-8 varieties. The most significant difference is its molybdenum content that (a) enhance its corrosion resistance and (b) maintain its strength at high temperatures.

WHERE TO USE:

Class 316 is better suited for marine and other coastal applications.

CLASS 321

Similar to Class 304 but with a much higher carbon content which reduces chromium carbide precipitation.

WHERE TO USE:

Class 321 is widely used in aircraft parts due its excellent resistance to vibration fatigue. Kanebridge carries a line of military-grade cotter pins made from class 321.

CLASS A286

A precipitation hardening stainless for use at high temperatures up to 1300 degrees F. Finished products have high tensile strength and good corrosion resistance.

WHERE TO USE:

Kanebridge carries a line of military-grade socket cap screws made from class A286.

CLASS A2 & A4

These are the classifications used with metric stainless fasteners. A2 is comparable to class 304 or 18-8 stainless, while A4 is closest to 316 stainless. The most used class of A2 is A2-70. A bolt of A2-70 has a tensile strength of 700 N/mm². The most common variation of A4 is A4-80 that has 800 N/mm² tensile strength.

SEMI-AUSTENITIC STAINLESS

These materials develop their greater strength and hardness via a range of heat treatments. They are austenitic in their annealed state; martensitic in their hardened state.

POSITIVES:

- High Strength
- High Toughness
- Excellent corrosion resistance

NEGATIVES:

- Can fracture in high strength and below zero temperatures.

TYPE 15/7

Another precipitation-hardening stainless that offers high-strength, good resistance to corrosion and does not distort after heat-treatment. It is also weldable.

WHERE TO USE:

Kanebridge carries a full line of retaining rings in 15/7 stainless.

MARTENSITIC STAINLESS

These classifications of stainless are hardenable, enabling them to be used in harder metals than an 18-8 stainless. Martensitic stainless is also readily identifiable by its magnetic qualities.

CLASS 410

Contains chromium but no nickel. It is easy to harden and cold-head.

WHERE TO USE:

Self-Drilling, Thread-Cutting, Thread-Rolling, Machine, Self-Tapping & Sems screws; Tooth Lock-Washers

CLASS 416

A better machining grade than 410 due to its higher chromium content. Ideal for fabricating nuts and machined products.

WHERE TO USE:

Kanebridge carries military-grade tooth-lock and split-lock washers.

CLASS 420

A high carbon/minimum chromium stainless. It has good ductility, very good corrosion resistance and can achieve the highest hardness of martensitic classifications.

WHERE TO USE:

Kanebridge carries Coiled and Slotted Spring Pins in 420 stainless.

PASSIVATION OF STAINLESS FASTENERS

The passivation process removes external materials from the surface. This act results in enriching the chromium content at the outer surface, enhancing the corrosion resistance of the outer layer.

DID YOU KNOW?



Mudge offers over 10,000 items in stainless steel. Our selection includes everyday standards and hard-to-find specialty fasteners, including, but not limited to:

THREAD-FORMING SCREWS

- Stocking alternatives to EJOT® Type-PT® Thread-Forming screws in A2 SS
- Flat and Pan head styles
- Sizes M1.6 thru M5 diameters.

SELF-DRILLING SCREWS

- Available in 18-8 & 410 stainless
- 7 head styles
- Diameters from #4 thru 3/8"
- Drill points from #2 thru #5

LOCK WASHERS

- Available in 18-8 & 410
- Sizes #2 thru 1"
- Flat Washers in 18-8 & 316 with sizes #2 thru 7/8"

STANDARD BLIND RIVETS

- Sizes from 3/32 thru 1/4"
- Rivet Nuts from 8-32 thru 1/4-20
- Drive Pins in 1/8 & 5/32" diameters

CLINCH NUTS & CLINCH STUDS

- Sizes from 4-40 thru 3/8-16

COILED SPRING PINS

- Available in 420 SS
- Sizes ranging from 1/16 thru 3/8" diameters
- Slotted Spring Pins in 420 SS and 1/16 thru 1/2" diameters

NYLON INSERT STOP NUTS

- 316 available in 1/4-20 thru 1/2-13 diameters
- 18-8 available in 2-56 thru 7/8-9 diameters
- Flex Nuts available in 18-8 from 6-32 thru 1/2-20

DOMESTIC SOCKET CAP SCREWS

- Available in 2-56 thru 1/2-13

MILITARY-GRADE HARDWARE

- Hex Cap Screws
- Machine Screws
- Hex Nuts
- Pins
- Sockets
- Washers
- Full Military Certifications available free of charge

MACHINE SCREWS

- 18-8, 316, 410 & 18-8 with Black Oxide
- 13 head styles
- Diameters from 0-80 thru 1/2-13
- Metric Machine Screws to DIN, ISO & JIS specifications

HEX CAP SCREWS

- 18-8 SS: 1/4-20 x 3/8" thru 1-8 x 8"
- 316 SS: 1/4-20 x 1/2" thru 3/4-10 x 6"

- Anchors
- Cabinet Screws
- Cage Nuts
- Cap Screws
- Carriage Bolts
- Clinch Nuts & Studs
- Coupling Nuts
- Deck Screws
- Drive Pins
- Drywall Screws
- Fender Washers
- Finishing Washers
- Flange Bolts
- Flexible Lock Nuts
- Hanger Bolts
- Heavy Hex Nuts
- High-Low Screws
- Jack Screws
- Jam Nuts
- Lags
- Lock Washers
- Machine Screws
- Nylon Insert Stop Nuts
- Piercing Screws
- Retaining Rings
- Rivets
- Self-Drilling Screws
- Sems
- Serrated Flange Screws
- Serrated Flange Nuts
- Slotted Pins
- Sockets
- Spacers
- Spring Nuts
- Standoffs
- Tap Bolts
- Tapping Screws
- Thread-Cutting Screws
- Thread-Rolling Screws
- Thumb Screws
- U-Drive Screws
- Weld Fasteners
- Wing Nuts
- Woodworking Screws



CHINA SPECIAL FASTENERS, INC.