

3M™ Extreme Sealing Tape 4411 & 4412 Series



From trailer, bus and rail car roof seams to metal enclosures, a sure winner over traditional sealants

3M™ Extreme Sealing Tape – instant sealing that rolls on fast and looks good

- Sticks on contact to many metals and plastics without dripping, oozing, or clean-up
- Increases productivity throughput with no drying time, immediately paintable
- Conforms over contours, edges, rivets and screw heads for a water tight seal
- Eliminates caulking guns to buy, clean and store and no empty cartridges for disposal
- Looks neat and precise; improved aesthetics
- Choice of three colors to match most applications
- Options of two thicknesses offer regular or low profile

Over time even more extreme advantages become obvious

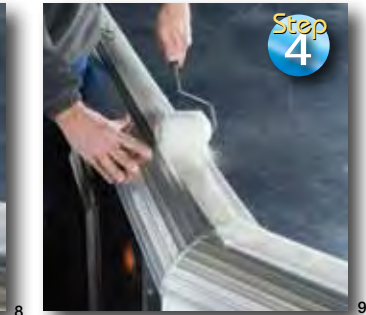
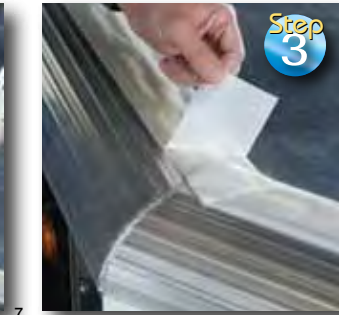
- Holds securely through sun, rain, snow, temperature and humidity extremes
- Outstanding resistance to many common industrial solvents
- Stays flexible to compensate for vibration and thermal expansion/contraction
- No cracking or crumbling
- Excellent resistance to abrasion and high pressure washing

Suggested Uses:

- Trailer and RV roofs
- Metal enclosures
- Awnings
- Trailer home roofs
- Metal storage buildings
- Vent stacks and vent windows
- Gutters and downspouts
- Skylights
- Outdoor sign/display
- Leak patching and repairs

3M

3M™ Extreme Sealing Tape – rolls on fast, seals instantly and stays tight



6 Simply clean with a solution of 50:50 water and isopropyl alcohol and wipe dry. Surface priming is recommended after cleaning for maximum performance.

7 Sticks on contact exactly where you roll it on. No drips and oozing. No waiting.

8 Peel off the release liner.

9 Roll down with a soft roller to conform over contours, seam edges, rivets or screw heads.

The winner over liquid sealants

- Easier to apply
- More consistent sealing results
- Improved appearance
- No drying or set-up time

The winner over other tapes

- Proven 3M acrylic adhesive
- Great outdoor environmental resistance
- Paintable surface



10



11

Product Information

Product	Color	Backing/Adhesive	Tape Thickness mil (mm)	Tensile Strength lb/in (N/cm)	90° Peel Strength* lb/in (N/cm)						Widths in (mm)	Length yd (m)
					Aluminum	Stainless Steel	Glass	Truck Paint	PVC	ABS		
4411G	Grey	Ionomer film/ Pressure sensitive acrylic	40 (1.0)	13 (23)	15 (26)	16 (28)	15 (26)	15 (26)	15 (26)	16 (28)	0.75, 1, 2, 2.5, 3, 4 (19, 25, 50, 65, 75, 100)	36 (32.9)
4411N	Neutral/Translucent				15 (26)	15 (26)	15 (26)	14 (25)	16 (28)	16 (28)		
4411B	Black				19 (33)	17 (30)	19 (33)	17 (30)	19 (33)	18 (32)		
4412G	Grey		80 (2.0)		18 (32)	18 (32)	16 (28)	17 (30)	18 (32)	18 (32)		
4412N	Neutral/Translucent				18 (32)	18 (32)	19 (33)	19 (33)	19 (33)	19 (33)		

* Adhesion promoters were used on peel adhesion test substrates.

Note: This technical information and data should be considered representative or typical only and should not be used for specification purposes.

Warranty and Limited Remedy: 3M warrants that each 3M product meets the applicable 3M product specification at the time 3M ships the product. 3M MAKES NO OTHER EXPRESS OR IMPLIED WARRANTIES OR CONDITIONS, INCLUDING ANY IMPLIED WARRANTY OR CONDITION OF MERCHANTABILITY OR FITNESS FOR A PARTICULAR PURPOSE. If the 3M product does not conform to this warranty, the sole and exclusive remedy is, at 3M's option, replacement of the 3M product or refund of the purchase price. **Limitation of Liability:** Except where prohibited by law, 3M will not be liable for any loss or damage arising from the 3M product, whether direct, indirect, special, incidental or consequential, regardless of the legal theory asserted.



Industrial Adhesives and Tapes Division

3M Center, Building 225-3S-06
St. Paul, MN 55144-1000
800-362-3550 . 877-369-2923 (Fax)
www.3M.com/Extreme

3M is a trademark of 3M Company.

Printed in U.S.A
© 3M 2013. All rights reserved.
70-0709-4048-4